



**GEBR. PFEIFFER**



# **PASSION FOR GRINDING**

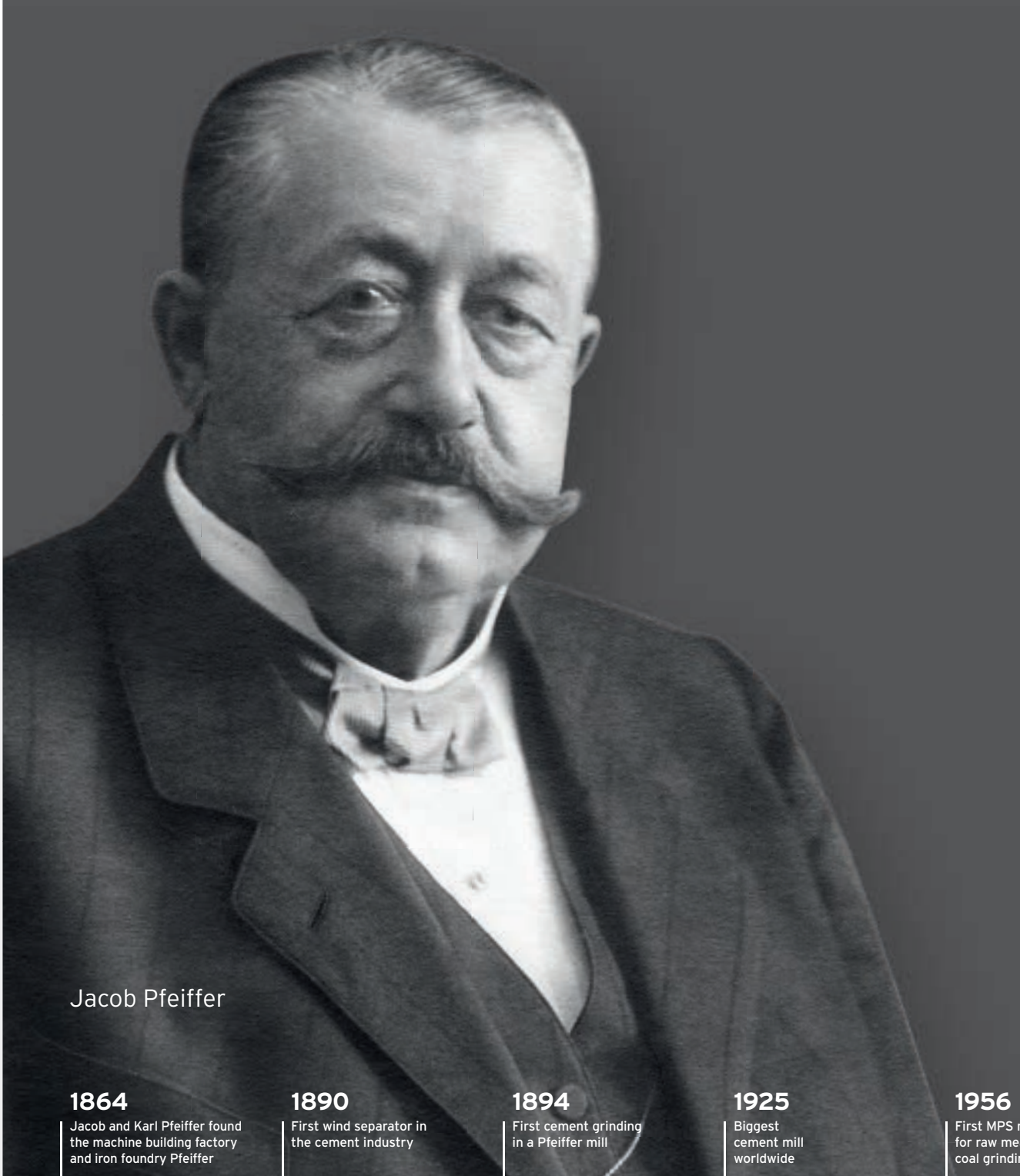






MVR 6000 C-6: the biggest vertical mill in Australia operating since 2014

# PFEIFFER. SETTING THE PACE. SINCE 1864.



Jacob Pfeiffer

**1864**

Jacob and Karl Pfeiffer found the machine building factory and iron foundry Pfeiffer

**1890**

First wind separator in the cement industry

**1894**

First cement grinding in a Pfeiffer mill

**1925**

Biggest cement mill worldwide

**1956**

First MPS mills for raw meal and coal grinding





# Gebr. Pfeiffer arising from a vision.

// In 1864, company founder Jacob Pfeiffer had a vision of grinding mineral raw materials on a large scale. This idea became reality. Today the company looks back on a long-time success story of developing the most modern mill technologies.

Behind the name of Gebr. Pfeiffer more than 500 employees are all united in the endeavor to carry Jacob Pfeiffer's passion and drive from generation to generation. As a family company rich in tradition, this is how we are giving new impetus. We have ever since been focusing on the development of our company on the long term rather than seeking any shorted-lived success. In fact this is how we have been able to present technological innovations on the market and make them secure their positions - like the development of the first vertical mill for cement grinding.

Another mainstay of Gebr. Pfeiffer's success is the striving for high quality - both with regard to our products and to ourselves. This principle along with our consequent orientation to our customers' individual requirements and our international presence make us one of the leading companies in the industrial sector. //

**1979**

First vertical mill  
for cement grinding

**1994**

More power for MPS mills  
by introducing the B-series

**2006**

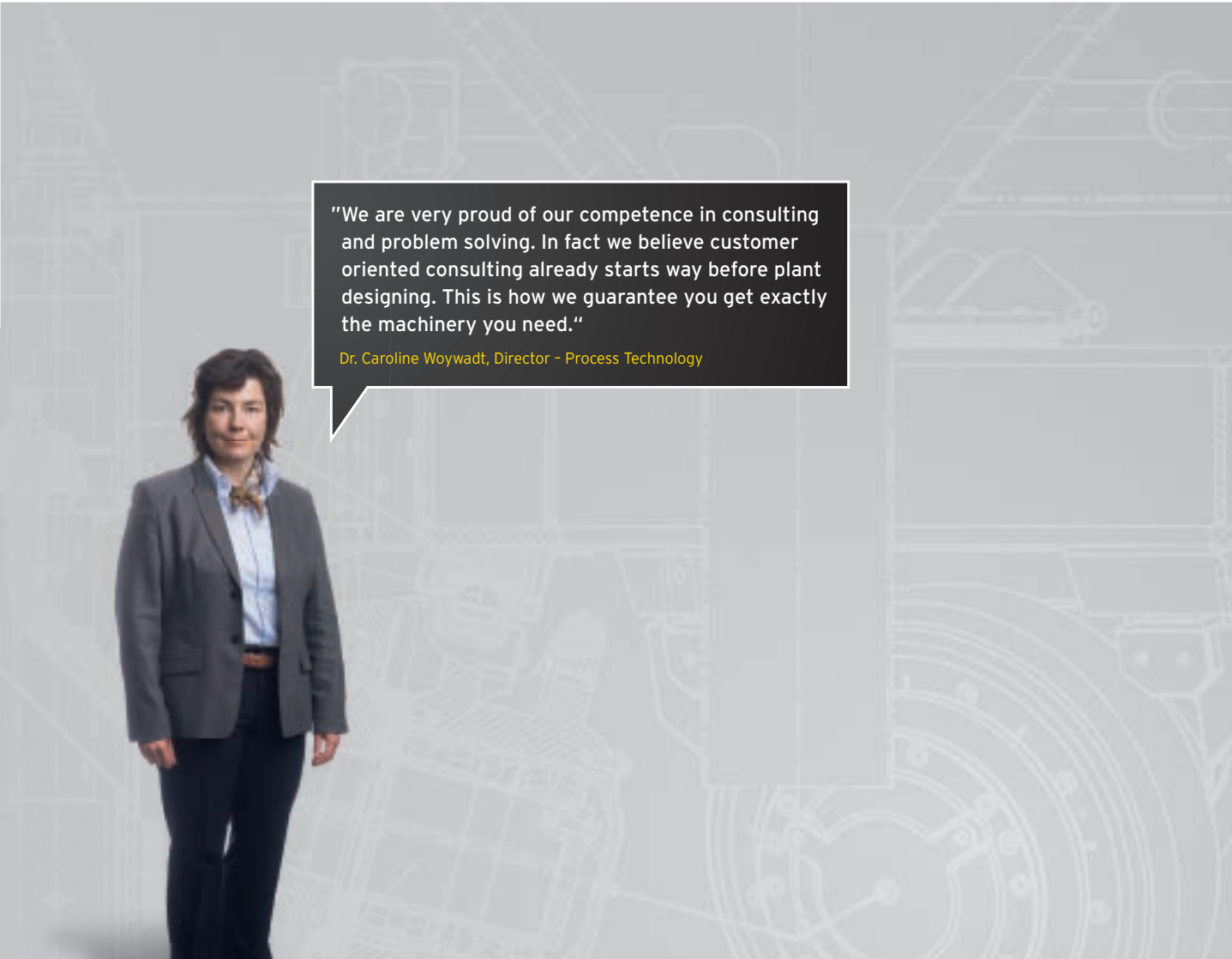
First MVR mill for  
cement grinding

**2007**

First vertical mill  
with MultiDrive®

**2016**

Biggest cement mill  
of the world in  
operation



"We are very proud of our competence in consulting and problem solving. In fact we believe customer oriented consulting already starts way before plant designing. This is how we guarantee you get exactly the machinery you need."

Dr. Caroline Woywadt, Director - Process Technology

## Your particular requirements Our individual solutions

// As a provider of complete solutions, Gebr. Pfeiffer offers innovative, market oriented systems. With decades of experience and excellent consulting competence, we are in a position to design the ideal plant to suit any customer's requirement. Good advice right from the start - no matter whether it's about raw material characterization, practical tests

on special pilot plants, conception and planning of individual plants or wear analysis for mills in operation - we at Pfeiffer assist you with our expert advice at any moment in time.

The result: individual overall solutions from one source perfectly suiting your requirement.





Determination of all important parameters at the test station



Characterization of products at the lab





TECHNOLOGICAL LEADER



MVR mill for the highest throughput rates

## We set milestones in technology.

// Ever new superlatives are wanted by the market. Therefore Gebr. Pfeiffer places significant investments in design and development. Our engineers work continuously on technological innovations and further developments to adapt not only to today's requirements but also to those of the future. Employing this

principle of thinking ahead, we have long become one of the technological leaders in the sector: for example, with innovations like the MPS vertical roller mill or the installation of the biggest vertical mill in the world, type MVR. And we are going to stick to this course of success.





## Revolutionizing mill technology: Pfeiffer MVR mill with MultiDrive®

The MultiDrive® has 3 to 6 identical drive modules which drive the grinding table with a total power of up to 12,000 kW. Throughput rates of more than 1,000 t/h can be reached. Moreover, the active redundancy of drives and grinding rollers ensures the highest availability of the mill. For the first time, throughput rates are achieved on a single MVR mill which so far had to be produced on 2 vertical mills operating in parallel.





# Manufacture: tailor made and accurate to dimension

// Quality and reliability are most important to our customers. Therefore clients all over the world have confidence in the outstanding engineering performance of Pfeiffer and premium quality made in Germany.

Each of our mills is a unique product: individually optimized and tailor-made to suit the customer's requests. Unlike many other manufacturers, we at Gebr. Pfeiffer have an inhouse production for the most important mill components - from the smallest cast part up to the complete machine.

"We do our own manufacturing. Our inhouse production depth ensures quality in the first place and moreover, we can react to any given circumstance, thus winning a decisive gain in time our customers may profit from."

Alexander Grill, Director - Manufacturing



GERMAN ENGINEERING



Individual manufacturing of machines at our workshops



Casting of wear parts in our inhouse foundry





Utmost precision of most modern CNC manufacturing  
at our mechanical workshop



Largely dimensioned assembly shop (volume 17,000 cbm)  
with 100 tons crane capacity

**Our customers  
place high demands  
in terms of quality.  
So do we.**



**// Pfeiffer products are the sum of best engineering performance and comprehensive quality management. Accurate planning of all phases of product development along with systematic control of product quality ensures results appreciated for their premium level by our customers.**

**Moreover, Pfeiffer plants are not only designed for performance but also for minimum wear and long lifetime. Hence our customers profit from highest reliability and optimum plant availability. //**

"High quality work starts in the heads of our staff. In fact no part will leave our premises without being inspected thoroughly. This is the quality standard our customers rely upon. And so do we."

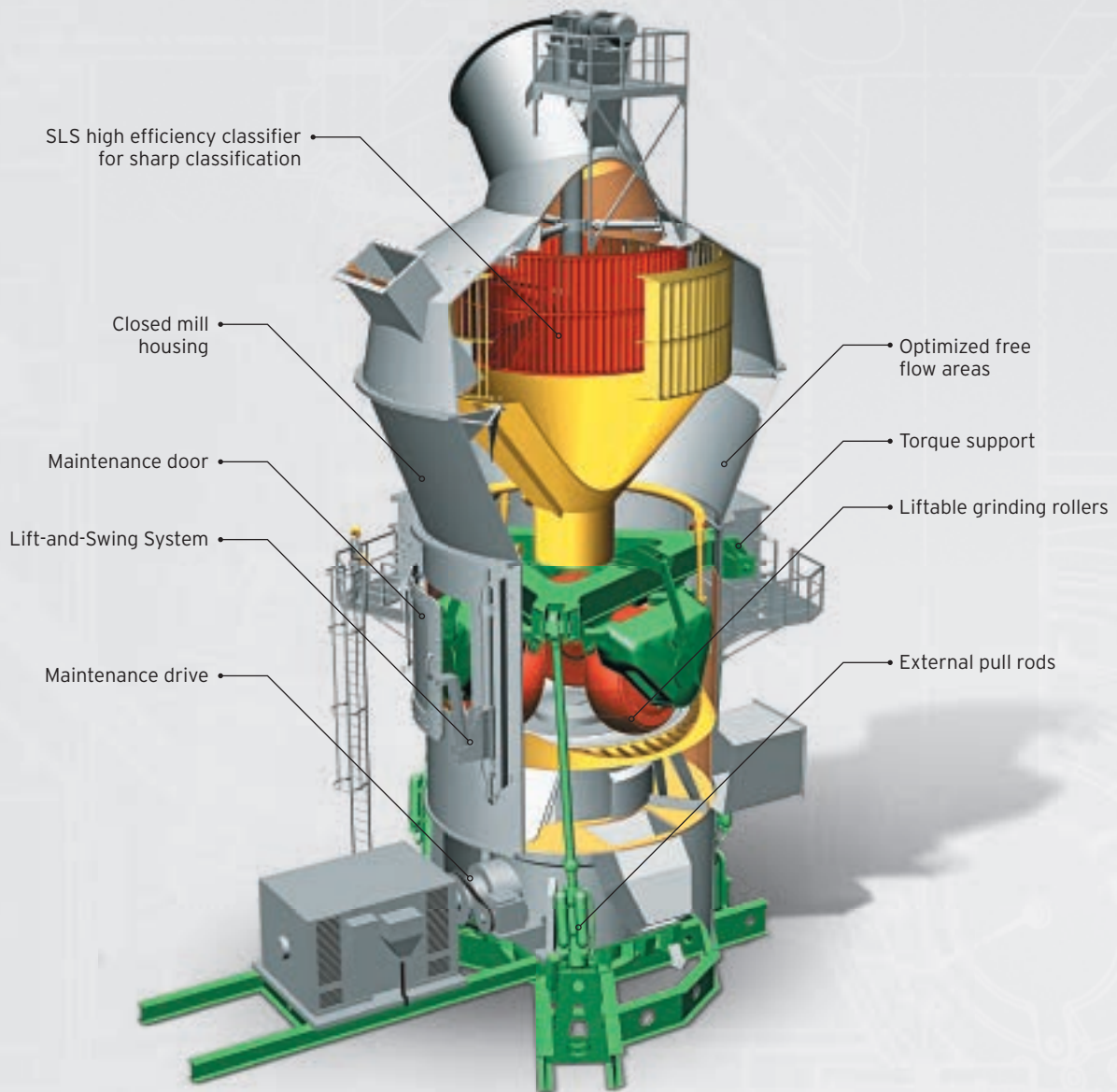
Wolfgang Späthe, Head of Quality Assurance



# **Our products. The perfect solution to any requirement.**

**// There is probably no one who could tell us something new about modern preparation of materials. In fact we do not only offer our innovative mills type MPS and MVR but also a wide portfolio of machinery for separating, drying, slaking and calcining. For any of your applications, we have the perfect solution from one source. And of course with the quality you expect from Pfeiffer. //**

# MPS vertical mill

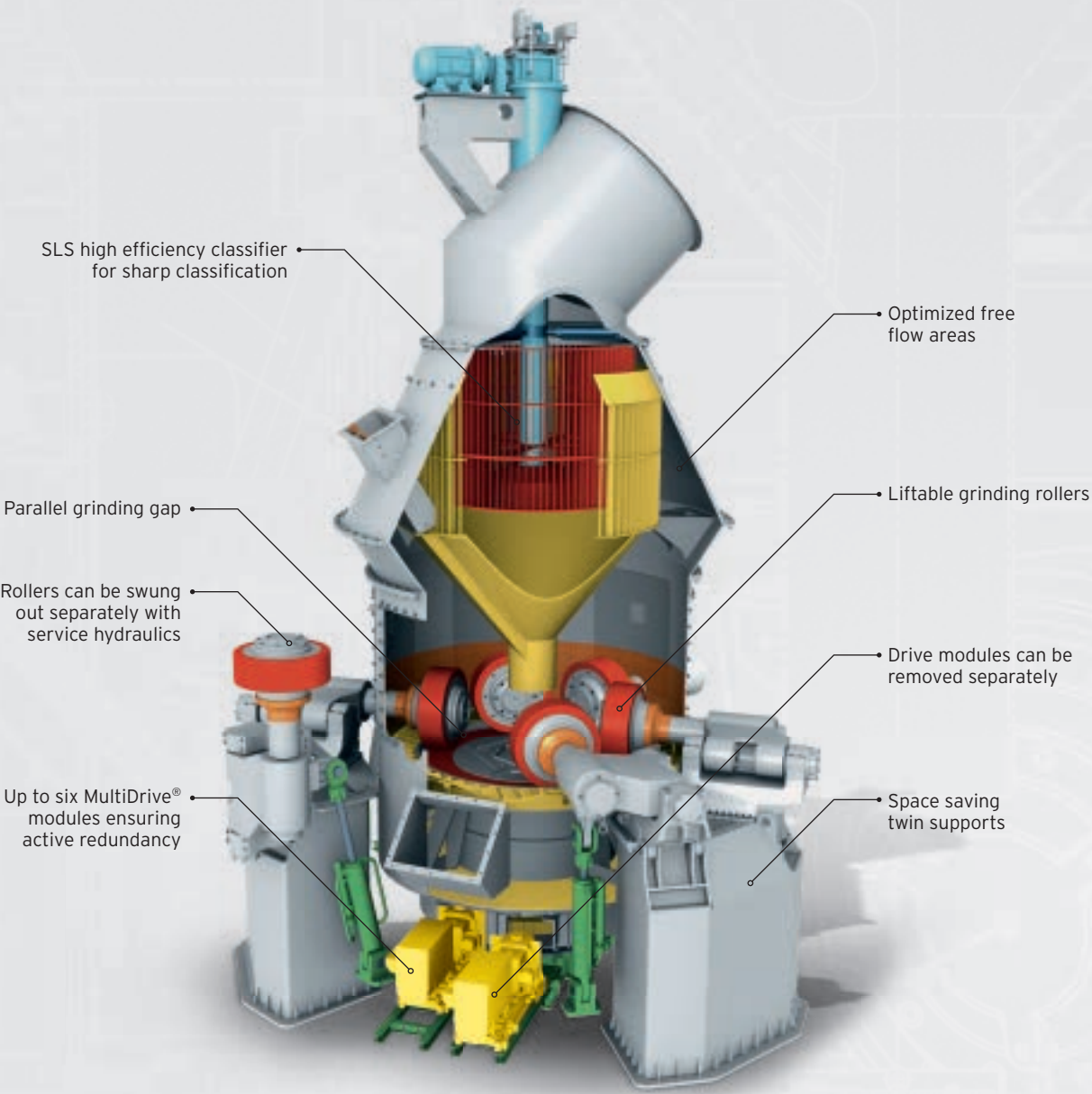


This proven mill type can be used for very different applications. Low capital investment, reduced energy consumption, low wear rates, and modern maintenance concepts make the MPS mill an economic solution for various industrial sectors.

| Industry         |                      | Grinding material  |           |                 |
|------------------|----------------------|--------------------|-----------|-----------------|
| Cement industry  | Chemical industry    | Cement             | Petcoke   | Clay            |
| Gypsum industry  | Refractory industry  | Granulated         | Gypsum    | Talcum          |
| Lime industry    | Power plant industry | blast-furnace slag | Limestone | Pozzolana       |
| Ceramic industry | Zinc industry        | Raw material       | Basalt    | Kaolin          |
| Steel industry   | and a lot more       | Coal               | Quicklime | and many others |

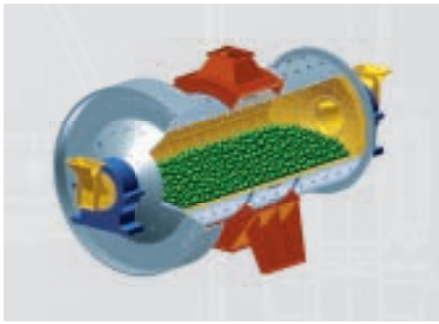


# MVR vertical mill



The MVR mill is the optimum solution for large throughput rates due to its very high availability with the active redundancy of rollers and drive system (**MultiDrive®**), low wear rates, and best maintenance friendliness.

| Industry        | Grinding material                                       |
|-----------------|---|
| Cement industry | Cement<br>Granulated blast-furnace slag<br>Raw material |



## Ball mills type MRE and MRD

Special mills designed for the specific application. Various materials are used for the liners and grinding balls.



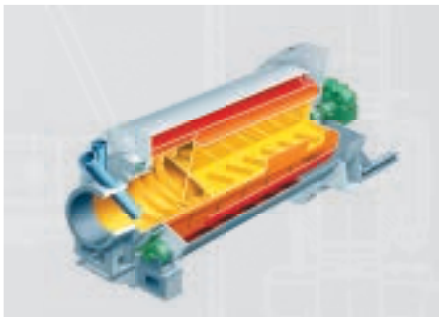
## SLV high efficiency separators

High efficiency separator for medium and small grain sizes down to the fineness range below 10  $\mu\text{m}$ .



## Separators type SUT and SUV

Separators ensuring very high precision cuts along with high throughput rates for cut sizes into the 30  $\mu\text{m}$  range. These separators are perfectly suited for dust collection.



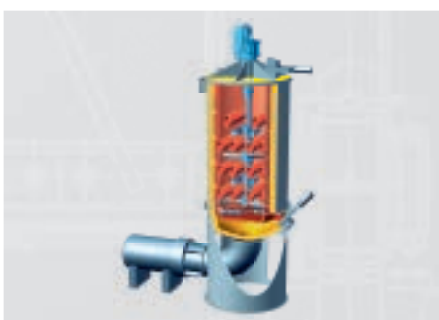
## TRT Triplex dryers

Gentle and efficient material drying with minimum energy consumption, low space requirement, and short starting and stopping times.



## Lime hydrators KLE, KLD, and KLV

Processing of all quicklime qualities with the most different feed sizes, producing non-expanding hydrates with guaranteed residual moisture rates of less than 1%.



## Gypsum calcining kettles GK

For calcining and producing high-grade stucco and special plasters with extended setting times and a very homogeneous product quality.

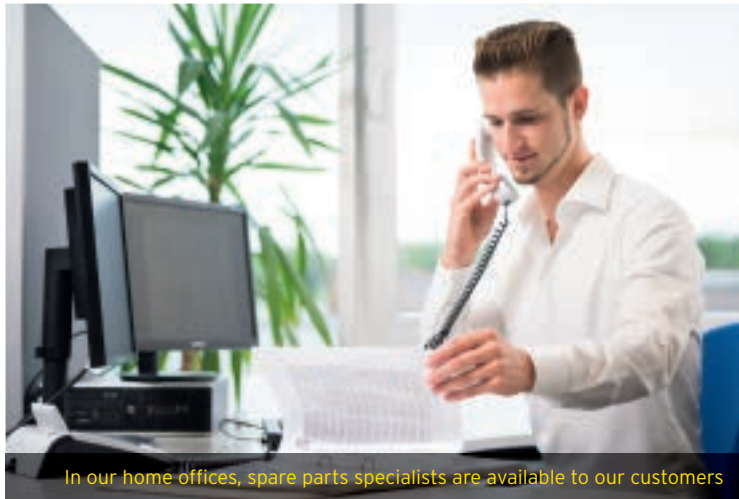




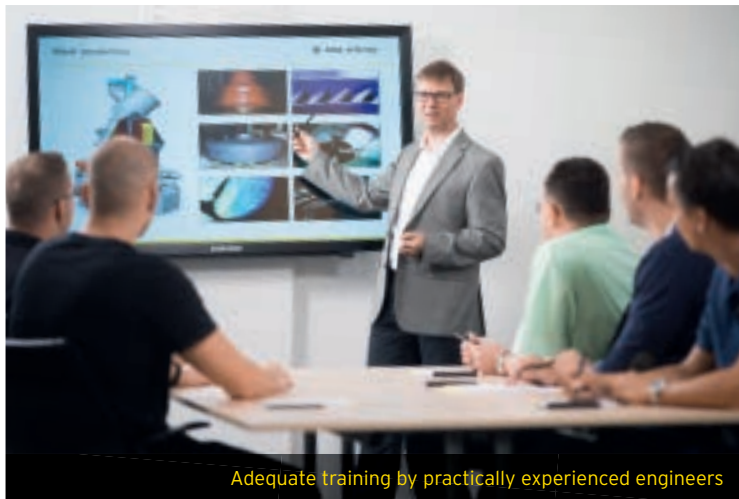
SERVICE COMPETENCE



Our supervisors coordinate all the necessary activities on the construction sites worldwide



In our home offices, spare parts specialists are available to our customers



Adequate training by practically experienced engineers

"We at Pfeiffer do not do things by halves. What we want actually is to accompany the customer from the very first meeting throughout the entire lifetime of his machinery and also keep plants that have been operating for many years fit for any requirements that will come up in the future."

Axel Auerbach, Head of Department - After-Sales Service



## Service without any compromise.

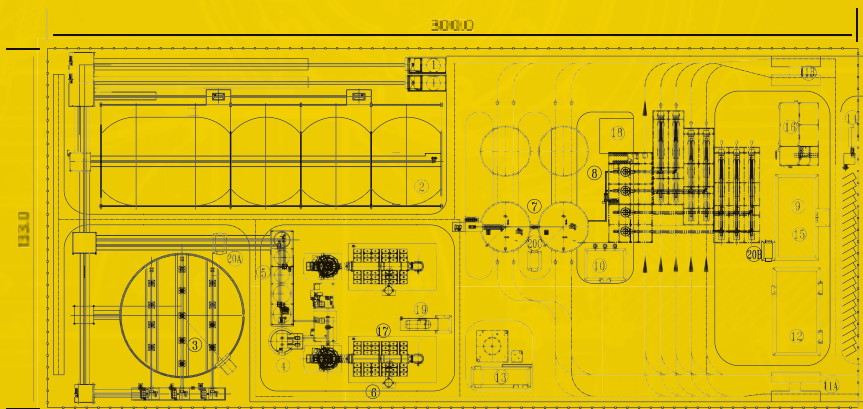
// We will stand by our customer's side giving him advice any time he needs it and throughout the lifetime of his plant. Our service portfolio includes the conception and planning of new plants and rebuilds, supervision of erection and commissioning as well as retrofitting, maintenance and modernization of

existing plants. To enable you to tap the full potential of your machinery, we offer training sessions for your qualified staff, focusing on field application. And not to forget our comprehensive spare parts service ensuring the economy of your Pfeiffer plant for many years following your investment decision.



# Gebr. Pfeiffer: Your partner for EPC projects and process-optimized turnkey plants.

// It's only a small step from a Pfeiffer mill to a turnkey plant. With our competence based on decades of experience in mill technology, we take the Pfeiffer vision to the next level: the supply of the overall package - the turnkey grinding plant. Gebr. Pfeiffer takes care of the entire project handling in the EPC business which is detailed planning and supervision, procurement and supply as well as execution of construction work and plant erection. We offer engineering, procurement and construction both for new projects and for the modernization of existing plants.





TURNKEY PLANTS





REFERENCES ALL OVER  
THE WORLD



Slag grinding on MPS 4750 BC in France



Coal grinding on MPS 200 BK in Ukraine



Limestone grinding on MPS 3350 B in China





**Pfeiffer. Successful in  
many industrial sectors.**



Cement grinding on MVR 5600 C-4 in India



Raw material grinding on MPS 5000 B in Turkey





Cement grinding on MVR 6000 C-6 in Australia





Raw material grinding on MPS 5300 B in Saudi Arabia



Gypsum grinding including calcining on MPS 180 GC in Croatia



Quicklime grinding on MPS 250 B in Poland



# Pfeiffer. Renowned all over the world.

// With our main offices and central manufacturing facilities in Germany and our subsidiaries in India, China, and the U.S. plus representations and agencies all over the world, we will be there whenever and wherever you need us. Our claim to be a leading company in the sector is substantiated by more than 2,800 Pfeiffer vertical mills installed worldwide.

"The numerous reference objects worldwide prove that Pfeiffer products are appreciated. Especially the many follow-up orders speak for themselves and confirm our work and philosophy."

Patrick Heyd, Executive Director - Sales and Project Engineering





First vertical mill with MultiDrive®

First vertical mill in the world for cement grinding 1979  
MPS 3750 C

Grinding-drying of raw material with a feed moisture of 26%  
MPS 5300 B

Coal grinding with subsequent injection of pulverized coal into blast furnace  
MPS 3350 BK

Lime grinding in the chemical industry  
MPS 200 B

Cement grinding plant with  
MPS 4250 BC

Raw material grinding in East Africa  
MPS 5300 B

Coal grinding in the zinc industry  
MPS 250 BK

100th Pfeiffer vertical mill in India  
MVR 6000 R-6

Biggest vertical mill of the world for coal grinding  
MPS 4500 BK

Biggest vertical mill in Australia  
MVR 6000 C-6

#### **Gebr. Pfeiffer SE**

Barbarossastr. 50-54  
67655 Kaiserslautern, Germany  
Tel.: +49 631 4161 0  
Fax: +49 631 4161 290  
info@gebr-pfeiffer.com

#### **Gebr. Pfeiffer do Brasil**

Rua 7 de abril, 235 - sala 507  
5º piso - República  
São Paulo - Brasil CEP: 01043-000  
Tel.: +55 11 3255 2681  
acruz@gebrpfeifferinc.com

#### **Gebr. Pfeiffer Inc. / USA**

18 501 Pines Blvd., Suite 208  
Pembroke Pines, FL 33 029, USA  
Tel.: +1 954 668 2008  
Fax: +1 954 358 5377  
coesch@gebrpfeifferinc.com

#### **Gebr. Pfeiffer (India) Private Ltd.**

C-39, Sector 62  
Noida 201309, Uttar Pradesh, India  
Tel.: +91 120 618 8900  
Fax: +91 120 618 8983  
ssvason@pfeifferindia.com

#### **Gebr. Pfeiffer Grinding Technology (Beijing) Co., Ltd**

Unit 0712, Tower T3  
Damei Center Plaza,  
Qingnian Road, Chaoyang District  
Beijing 100025, China  
Tel.: +86 106 590 7008  
Fax: +86 106 590 7006  
xudeyu@pfeiffer-china.com





**GEBR. PFEIFFER**

